

SONO/MAX® makes all your projects more manageable. Enjoy the "green comfort" benefits.



VERSATILE

Versatile acoustic system, compatible with wood 3/4" engineering, laminate flooring, ceramic, marble. Suitable for wood, concrete and Hambro system structures



EFFICIENCY

- SONO/MAX® is light
- SONO/MAX® is ideal for mechanical fixing of wood
- Easy to install, saves engineering labour
- Can be laid without glue (floating)



DURABILITY

- Impressively resistant
- Prevents subfloor cracks from reaching the surface.
- Meets CAN/ULC-S 706 type 1, category 2 standards



COMFORT - AIRBORNE SOUND ABSORPTION AND SOUNDPROOFING AGAINST IMPACT NOISE

The SONO/MAX® noise control system meets ASTM-ISO noise standards

- Engineered wood on concrete slab (FIIC 61 to FIIC 65 depending on assembly)
- Ceramic on concrete slab (FIIC 61 to FIIC 65 depending on assembly) According to ASTM E989-89 ASTM E1007-97



PROTECTION

Ultra-Fresh antibacterial and antifungal treatment registered with Health Canada



THERMAL INSULATION

Excellent thermal properties
Cuts the thermal bridge according to the type of construction
Thermal resistance (factor R3.00)



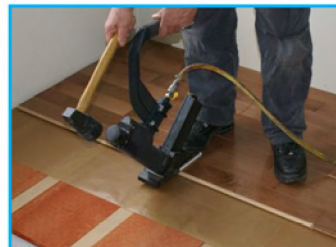
ENVIRONMENTALLY FRIENDLY MATERIALS

- Recyclable, ecological and environmentally friendly
Made from products made of 15% post-consumer recycled materials and 85% post-industrial recovered materials.
Contains no volatile organic compounds, HCFCs or pentanes.
Allows you to obtain LEED credits

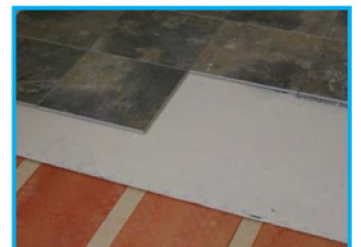
BUILD EVERYDAY FOR TOMORROW



SONO/MAX® 25mm
pat.pending



*SONO/MAX® perfect for the installation of engineered wood. See installation sheet.



*SONO/MAX® can be combined with a support panel (Fiberock, PermaBase, Durock) to receive ceramic, marble, granite.



MATERIALS

100% natural material, environmentally friendly, produced under constant quality control. Meets CAN/ULC S706 type 1 category 2 standard. CCMC insulating panel 03240-L
The substrate must be dry and in perfect technical condition
Follow the installation instructions to eliminate dust.

ACOUSTIC PERFORMANCE

Engineered wood on concrete slab FIIC 61 to 65
Ceramics on concrete slab FIIC 61 to 65
ASTM E989-89-89 standard exhibition
ASTM E1007-97
See floor cuts on: www.sonomax25.com

ROBINSON TEST

Exceeds the requirements of the "residential" class as defined in the Floor Tiling Installation Guide ASTM C 627-93 (1999)
Groupe CTT Group
See report's details on: www.sonomax25.com

ENVIRONMENTAL BEHAVIOUR TEST

The system has successfully responded to changes in environmental conditions. Test performed by Forintek Canada Corp.
See details of the report on: www.sonomax25.com

DIMENSIONS

Soundproofing panel

Thickness	Dimension	Weight	Panels/	p2	Weight/Pal
Inch	Inch	Unit	Pallet	Pallet	Lbs
1"	10" x 48"	4.40 lbs	160	533	1050

Profiled slats

Thickness	Dimension	Weight	Pieces*/	p2
Inch	Inch	Unit	Pallet	Pallet
1/2"	2" x 48"	1.73 lbs	160	533

*Storage

Always store supported in a dry place, protected from the elements and covered with an impermeable cloth.

TECHNICAL DATA

Controlled manufacture according to Profile	CAN/ULC S706 type 1 category 2
Thickness	Grooves
Linear expansion	1.00 inch
Water Absorption(2HRS)	ASTM D-1037 0.50%.
Thermal value	ASTM D-1037 7.25% vol.
Thermal conductivity	ASTM C-518 3.00 R
Compressive force at 10% deformation	ASTM C-518 0.33 K
Density	ASTM C-165 26.81lb/p02
Antimicrobial properties	ASTM D-1037 16.00 lb/ft3
	ASTM G-21-96 (2002)

FLAMMABILITY CONDITION

Difficult to ignite. Flame spread index of about 70 (test CAN4-S102)
Smoke power index of about 49, contribution to the fuel load of about 53, all results are according to the same test method.
Auto-ignition temperature 260 °C
Toxicity: Exposure to this product is not expected to cause adverse effects.
Profiled batten: Meets ANSI A2008.2 2002 standard
Method for evaluating technical data ASTM D-1037-99
Formaldehyde emissions < 0.30 ppm

IMPORTANT

SONO/MAX performance is conditional on compliance with the written installation instructions provided by the manufacturer. Wood categories with a high % of short boards (12" or less) in a package MUST NOT be installed on the SONO/MAX system.

For more information,
visit sonomax25.com